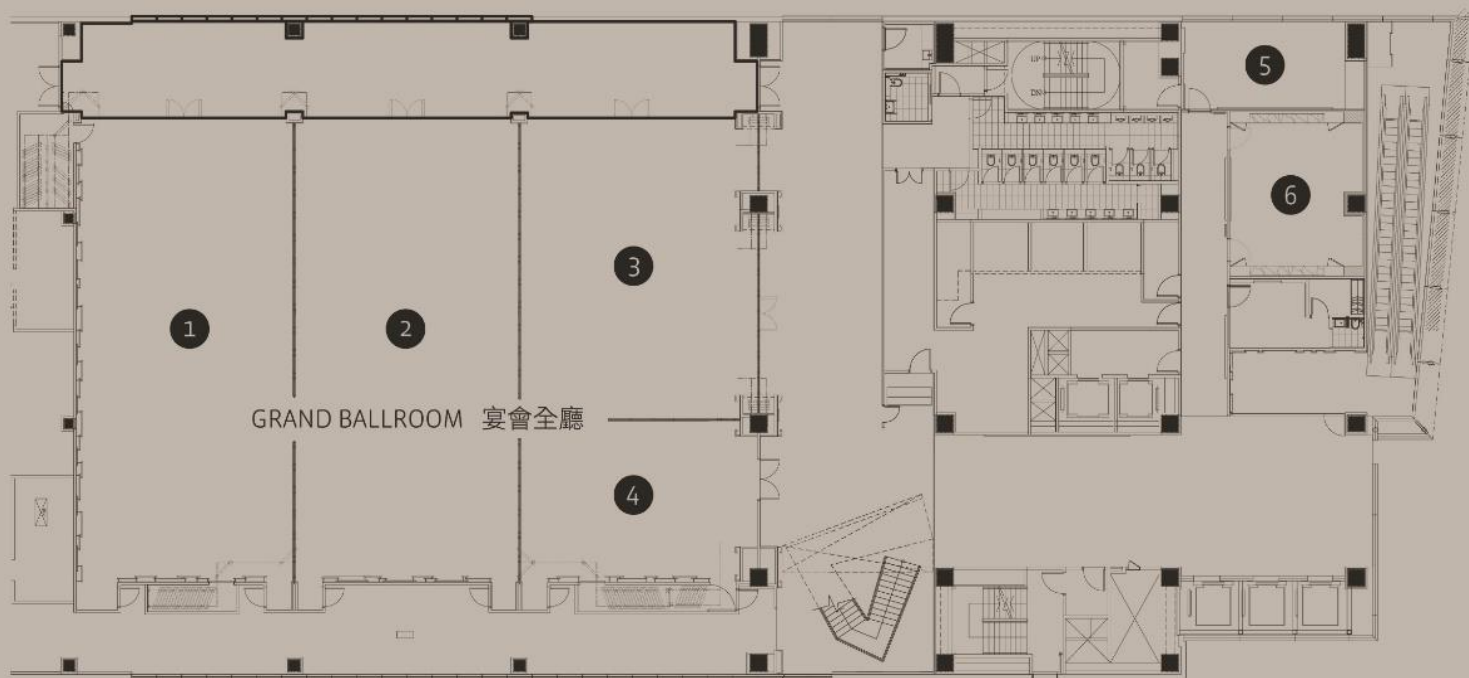




## UNEQUALLED MEETINGS & EVENTS VENUES 新品味層次的會議及活動

With a total area of 702 square meters, the ballroom is composed of four halls, accommodating up to a thousand guests. In addition, there are two function rooms and a VIP room. Featuring neat and distinctive layouts, these rooms flexibly adapt to changes in space requirements. The whole venue is equipped with state-of-the-art audiovisual, lighting, and compatible technology equipment. Along with delicacies served by our professional culinary team, the venue is perfect for all kinds of events, meetings, and banquets.

宴會廳總面積為702平方公尺，一共規劃4間廳堂，最多可容納近千人，另有設置2間多功能室及1間貴賓室，其俐落鮮明的格局，保持空間變換的靈活度，場地配置全套先進的影音、燈光及技術配套設備，專業的餐飲團隊更提供多款美食佳餚選擇，滿足各式會議及活動舉辦的需求。



- ① THE ORCHID 蘭
- ② THE SUNFLOWER 葵
- ③ THE MAPLE 楓
- ④ THE CYPRESS 柏
- ⑤ FUNCTION ROOM 1 多功能室 1
- ⑥ FUNCTION ROOM 2 多功能室 2



### Half Day Package

NT\$2,200+10% per person

A minimum of 25 guaranteed people are required

### Full Day Package

NT\$2,500+10% per person

A minimum of 25 guaranteed people are required

### Package Includes

#### Venue Periods:

-From 08:30 to 12:00 or from 13:30 to 16:30

#### Food and Beverage:

-Offering morning or afternoon coffee break  
-Lunch

#### Package:

-Conference amenities including writing pads, pens, candies and water  
-Usage of flip chart / white board (upon hotel availability)  
-Full-time butler dedicated to your function

#### Audio –Visual Equipment:

-2 x Wireless microphones  
-One set of built-in LCD projector with screen

#### Venue Periods:

-From 08:30 to 16:30

#### Food and Beverage:

-Offering morning and afternoon coffee break  
-Lunch

#### Package:

-Conference amenities including writing pads, pens, candies and water  
-Usage of flip chart / white board (upon hotel availability)  
-Full-time butler dedicated to your function

#### Audio –Visual Equipment:

-2 x Wireless microphones  
-One set of built-in LCD projector with screen

### Rental Fee

FUNCTION ROOM \ TIME FRAME RANGE \ RENTAL FEE	早上時段	下午時段	晚間時段	超時費用	全天時段	夜間佈置時段
	MORNING SESSION 08:00 - 12:00	AFTERNOON SESSION 13:30 - 16:30	EVENING SESSION 18:30 - 22:00	ADDITIONAL HOUR (以小時計算 / PER HOUR)	FULL DAY 24 Hours	OVERNIGHT SET UP 00:00 - 08:00
宴會廳 GRAND BALLROOM	138,000	146,000	1,035,000	58,000	1,319,000	100,000
蘭廳 ORCHID	43,000	48,000	330,000	22,000	421,000	30,000
葵廳 SUNFLOWER	43,000	48,000	330,000	22,000	421,000	30,000
楓廳 MAPLE	36,000	38,000	236,000	16,000	310,000	20,000
柏廳 CYPRESS	18,000	20,000	120,000	10,000	158,000	10,000
多功能會議室 I FUNCTION ROOM I	11,000	11,000	45,000	4,500	67,000	8,000
多功能會議室 II FUNCTION ROOM II	11,000	11,000	45,000	4,500	67,000	8,000
VIP ROOM	9,000	9,000	9,000	4,000	27,000	8,000



HumbleHouse  
TAIPEI

寒舍艾麗酒店

For more information,

Please contact at

T : 02 6622 5846

T : 02 6622 8007