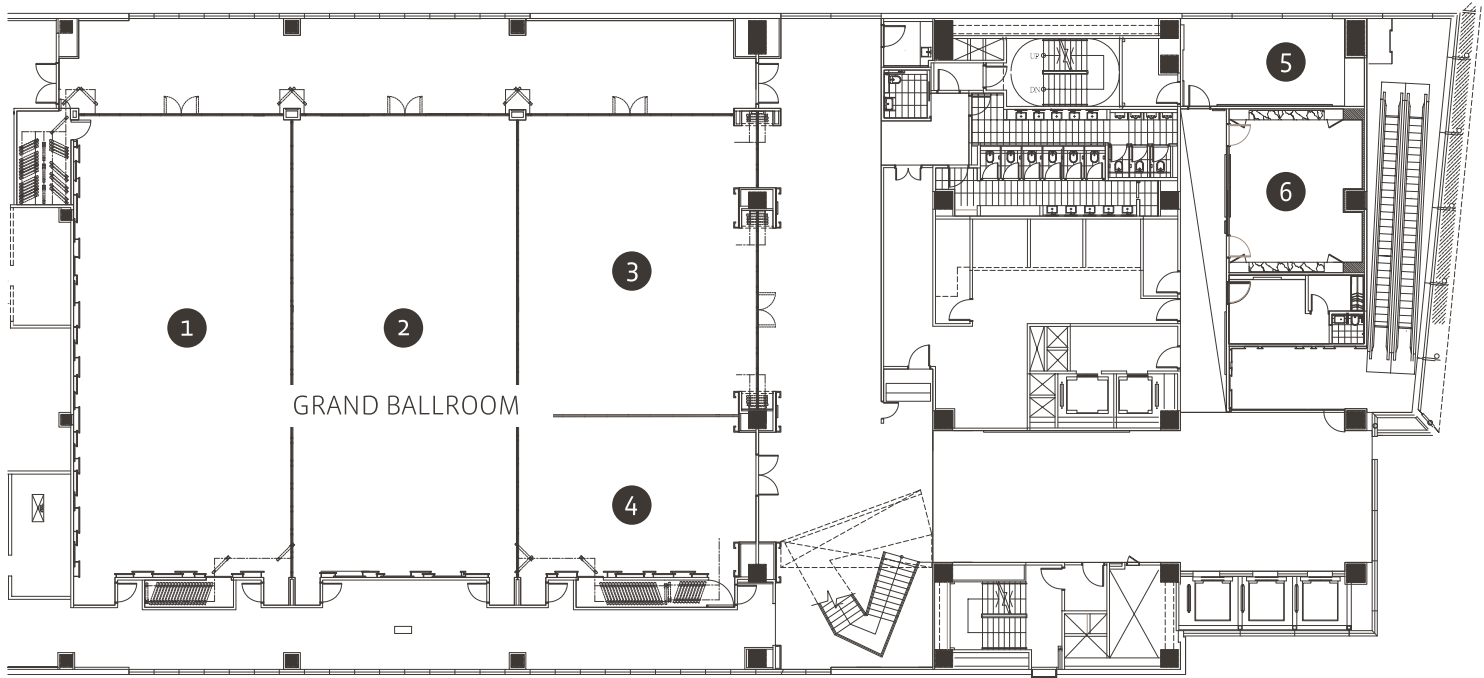




## The Grand Ballroom Floor Plans



VENUE	PING	AREA (m <sup>2</sup> )	L (m)	W (m)	H (m)	BANQUET (round table)	THEATER (by person)	CLASSROOM (by person)	BOARD ROOM (by person)
GRAND BALLROOM	212	702	21.80	32.20	5.3	50	700	360	-
① THE ORCHID	67	220	21.80	10.10	5.3	15	240	132	-
② THE SUNFLOWER	70	233	21.80	10.70	5.3	15	240	132	-
③ THE MAPLE	49	163	14.30	11.40	5.3	11	160	105	-
④ THE CYPRESS	25	84	7.40	11.40	5.3	5	80	45	-
⑤ FUNCTION ROOM 1	10	32	7.70	4.20	3.3	1	20	12	15
⑥ FUNCTION ROOM 2	11	37	5.50	6.8	3.6	2	32	18	18

HumbleHouse

TAIPEI

寒舍艾麗酒店